

# OBJEKT<sup>©</sup>

INTERNATIONAL

77 UNIQUE LIVING

**MARCEL WANDERS**  
MONDRIAN DOHA

**AXEL VERVOORDT**  
RETURNS TO  
**PALAZZO FORTUNY**

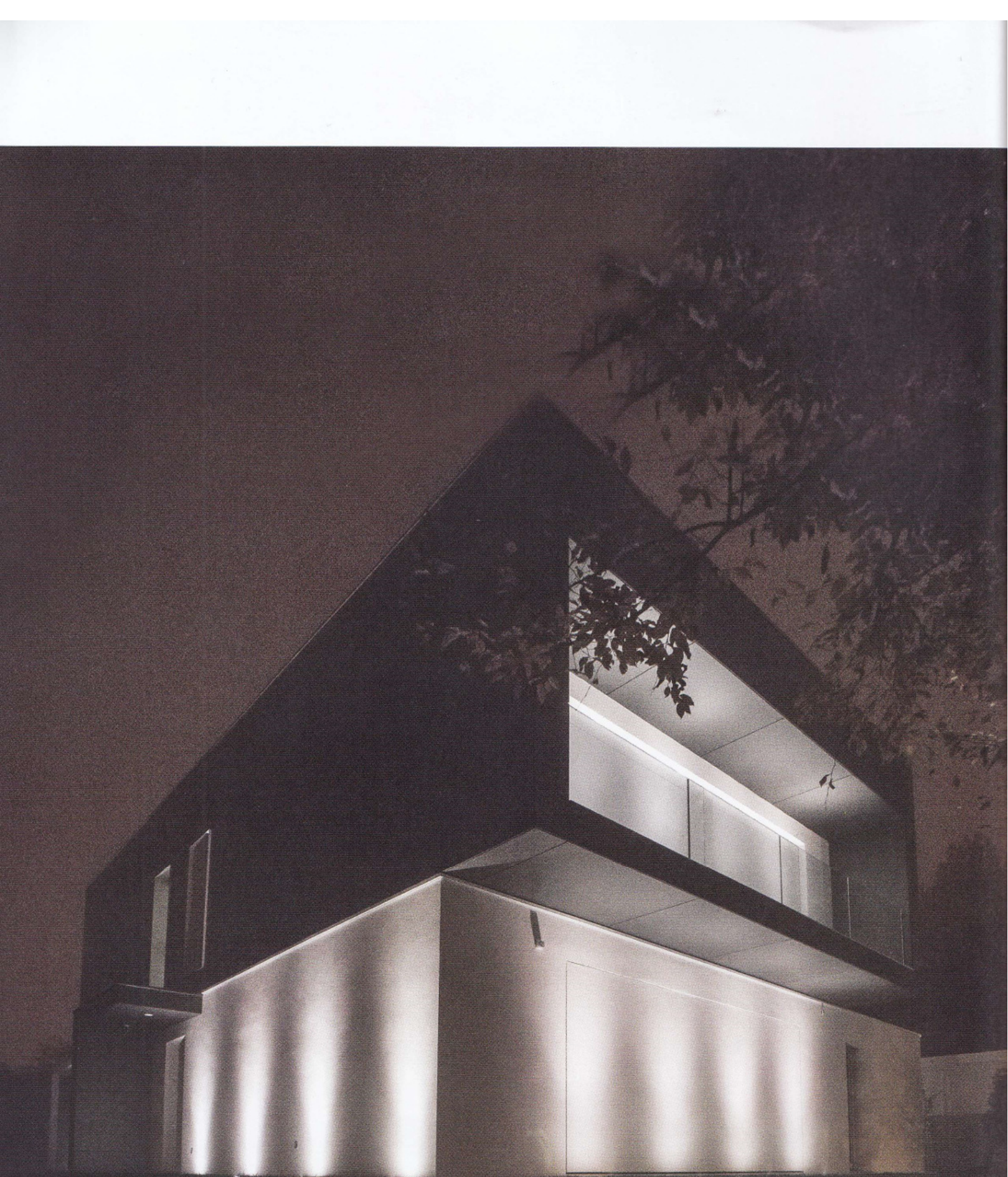
**MILAN DESIGN**  
**EXPLOSION**

**ART**  
**UNDER THE**  
**FLORIDA SUN**

**YACHTING**  
**IN THE**  
**FAST LANE**

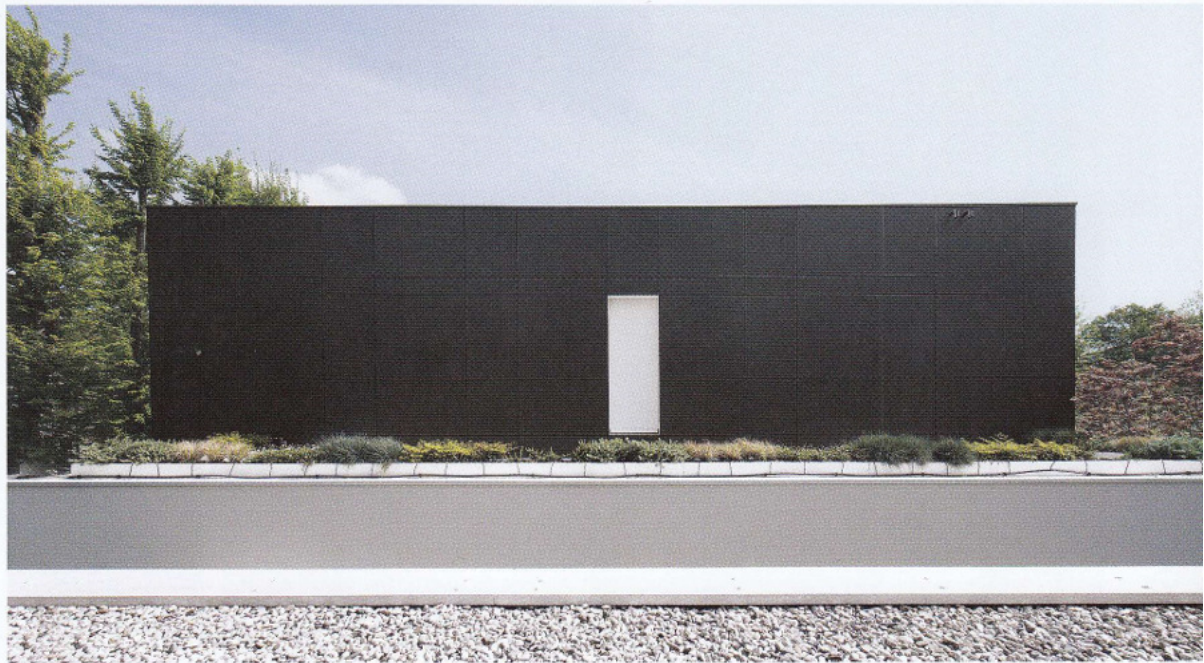






The ventilated facade is made of Metheon Metallic by Trespa, the footpath and pavement are by Trani marble and the flooring is by Floorgres. Doors and windows are by Impronta, the garage door is by De Nardi and the lighting by Axo Light.





## MODERN LIVING IN TREVISO, ITALY

Located in the historical Krull park in the city of Treviso, Italy, the house with its simple, lightweight and bright volumes highlights the park's features. It was designed by architect Andrea Rossetti.





The open space with kitchen and living room area houses an Arrital cucine kitchen, a range hood by Falmec and faucet by Gessi. The library and storage furniture in white oak is custom made. The suspension lamp and floor lamp are by Axo Light. Flooring is by Floor Gres. In the bathroom, a mirror by Agape, heated towel rail by Tubes, a sink by Arlex-Italia and a basin by Agape. The faucets are by Gessi, wall lamps by Axolight and flooring is by Listone Giordano. The studio has a chair by Luxy, a wall and table lamp by Axo Light and a floor by Listone Giordano.

Right-hand page: the courtyard of the Treviso house. Large windows link indoor and outdoor spaces.

According to architect Andrea Rossetti, the volumes of the house reflect the surrounding nature. Thanks to its innovative material surface, the building changes color and appearance with the effect of sunlight and glare from its setting.

This is a 'zero energy' building, meaning that the total amount of energy it consumes on an annual basis is roughly equal to the amount of renewable energy created on site.

Energy autonomy is guaranteed by solar and photovoltaic panels, through a powerful domotic system, innovative materials and cutting-edge construction techniques.

The residential building has a ventilated façade system that makes it energy efficient and low maintenance. The façade system produces a chimney effect, drawing air through the cavity, and is effective for the removal of heat and moisture. The façade also blocks solar radiation. The continuous insulation considerably reduces the need for air conditioning. The building's dry and comfortable conditions make a positive contribution to the quality of the indoor environment and so enhance comfort within living areas.

Internally, space distribution takes advantage of natural light and solar heat.

Finally, large windows and green walls help in maintaining a seamless connection to the park, dissolving the boundary line between indoors and outdoors.

Andrea Rossetti was born in 1980 in Motta di Livenza, Italy. He is an architect, designer and traveler. After graduating from the University of Venice with a Master's degree in Architecture he lived and worked in Barcelona, dealing with construction of hotels, healthcare and education institutions, retail, interiors and furniture design. In Spain he worked in several well-known architecture companies and for Axel Hotels.

As a designer, his main interest is to overcome challenges and see new perspectives. In 2008 he founded !COODi, his design firm as a cooperation of ideas and an open laboratory for the conception and application of projects in art and design. In 2012 he moved to Canada, where he has worked for one of the most important interior design firms in Toronto.



