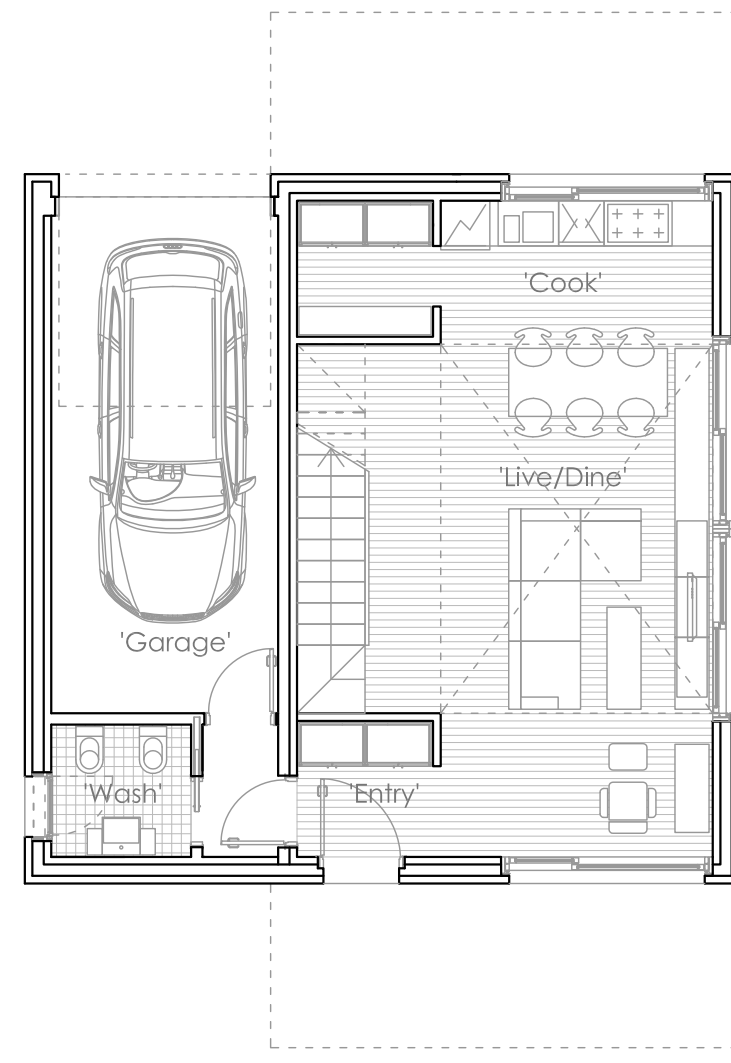
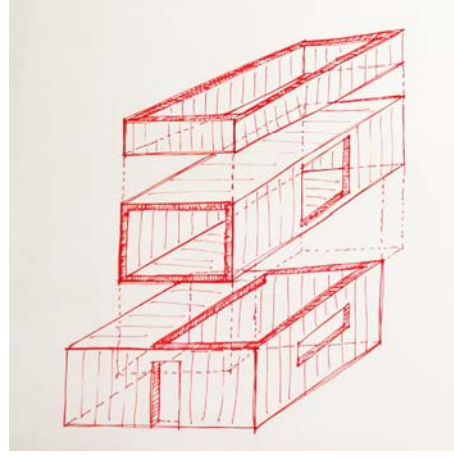


T - House is the right combination between two simple elements.

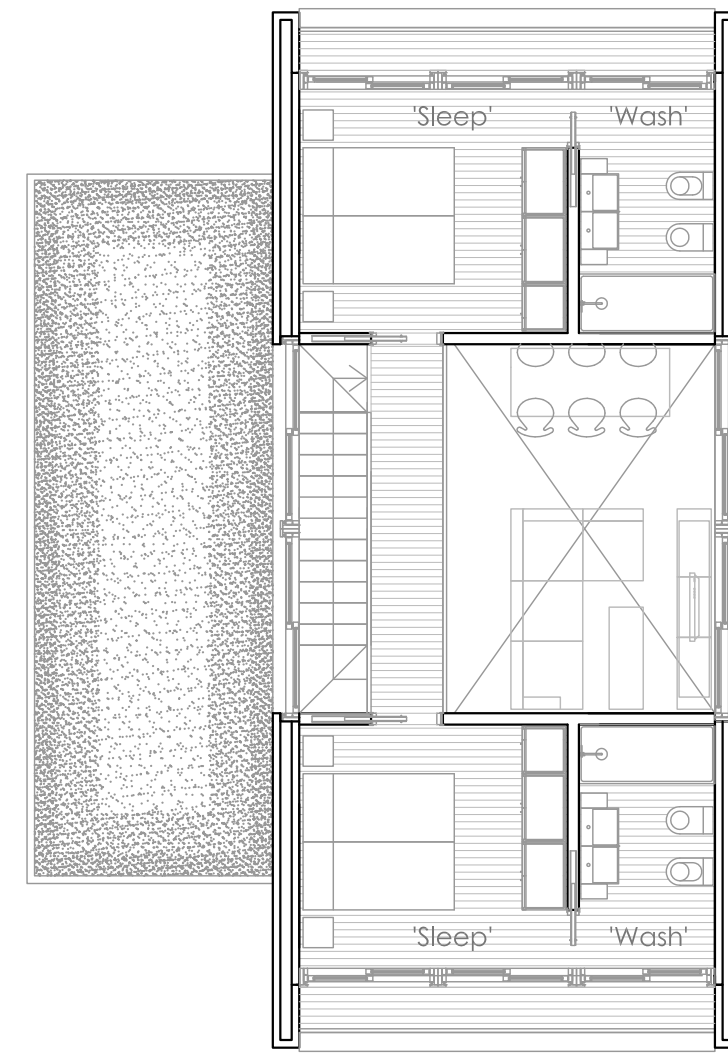
The first element, the **'Base'**, contain dining cooking and relaxing spaces. It's a great open space focused on the living area with a huge open to above that give to the room a **special feeling**.

The second element, the **'Suspended'**, connected by the open stair from the ground floor, is characterized by one cantilever box with the 'sleeping' area. **This part could be custom made by the client.** In fact it's possible to modify the distribution plan, choosing between (Option A) two master suites with bathroom and garden roof or (Option B) one master suite with bathroom and one open studio with access to the big terrace. Another available option will be change the roof shape, choosing between a flat roof or a gambrel roof.

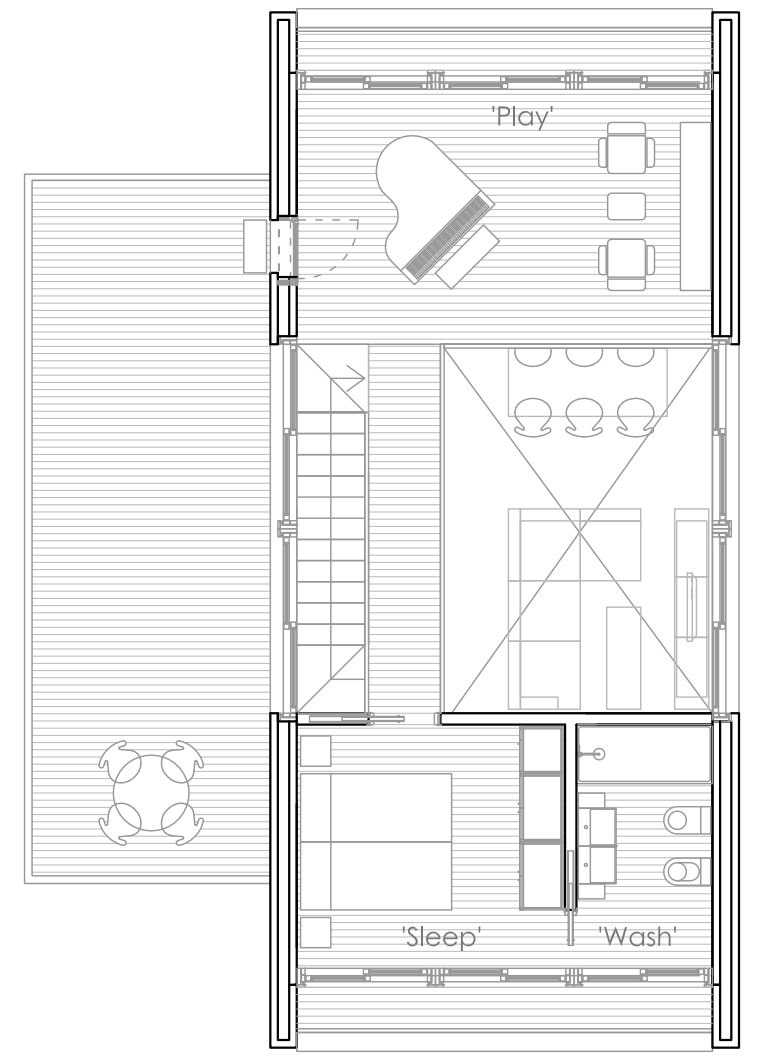
The structure is made by structural wood covered by two different materials, one for the ground floor and the other one for the first floor. The idea is to use a ventilated facade for the cantilever element (with many types of customizations) to mark different areas and finally give more dynamism to the entire volume.



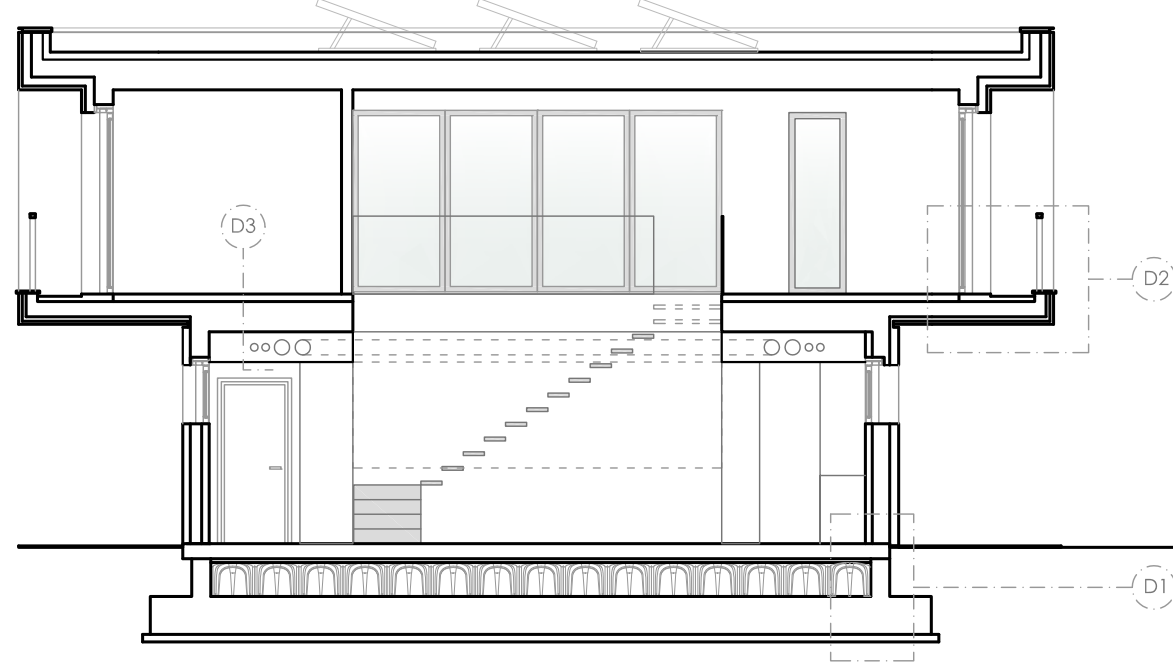
GROUND FLOOR 1:100



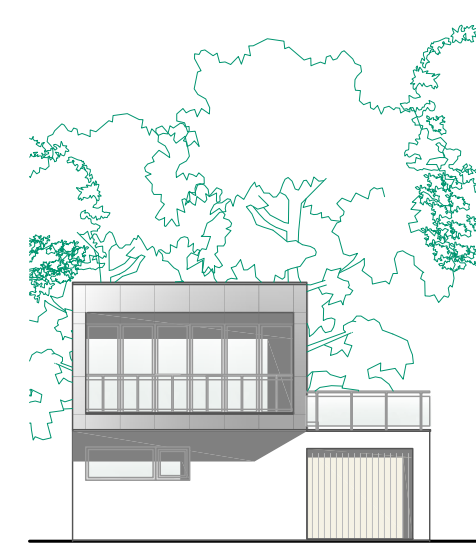
FIRST FLOOR (opt A)



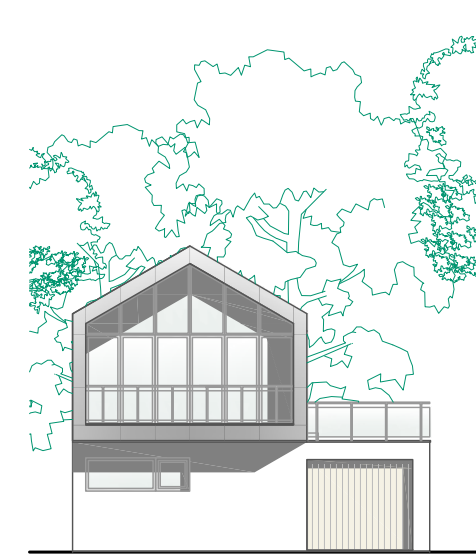
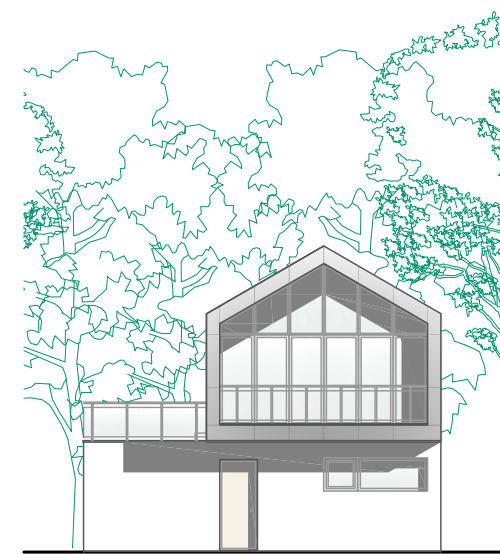
FIRST FLOOR (opt B)



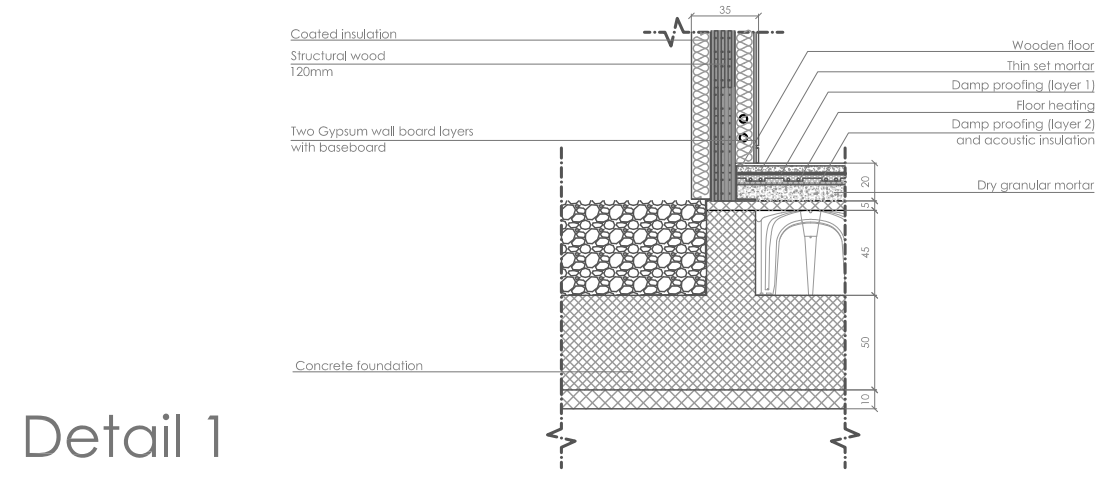
SECTION 1:100



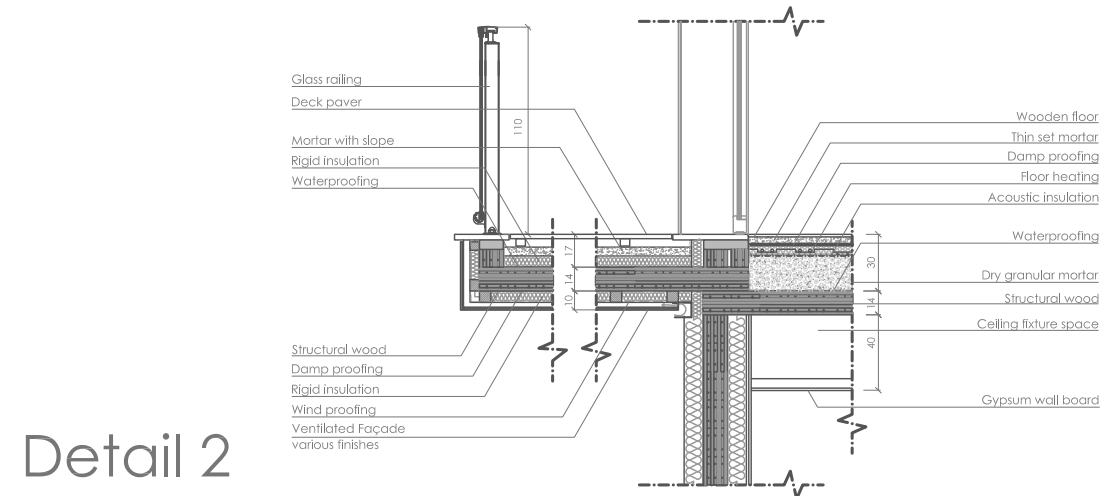
ELEVATIONS - flat roof option 1:200



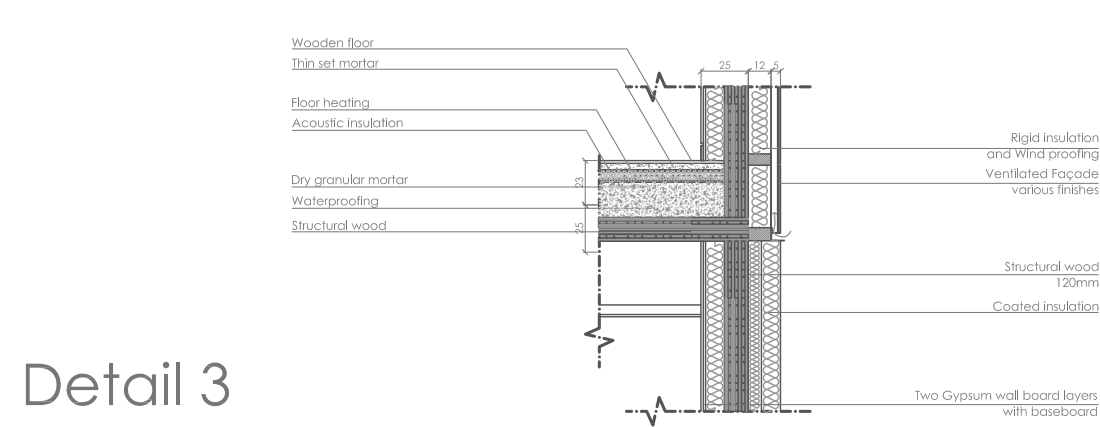
ELEVATIONS - gambrel roof option 1:200



Detail 1



Detail 2



Detail 3



T-house

ANDREA ROSSETTI architetto - andrea@andrea-rossetti.com

